

IPLOOK



CONTENTS

- **Company Profile**
- **Products & Solutions**
- **Advantages & Innovations**
- **Industry Collaboration**



1

Company Profile

Who We Are

Founded in 2012, IPLOOK is a global leader in end-to-end, cloud-based **mobile core network solutions**. Specializing in full-stack **3G/4G/5G/IMS** core network technologies, IPLOOK provides carrier-grade and high-performance solutions for **Mobile Operator**, and **MVNO**...



Certificates

- **2G/4G/5G full core network** elements access certificate
- Holds **CMMI-3** and **ISO9001** certifications
- **70+** software copyrights and **500+** patents in core network field

Official member





2

Products & Solutions

Product Lines

2G/3G Core



4G Core(EPC)



5G Core(5GC)



Integrated CSFB & PSHO Support for Legacy Compatibility



Smooth Migration or Upgrade from 2G/3G(Huawei/ZTE/Nokia...) to 4G/5G Core Networks



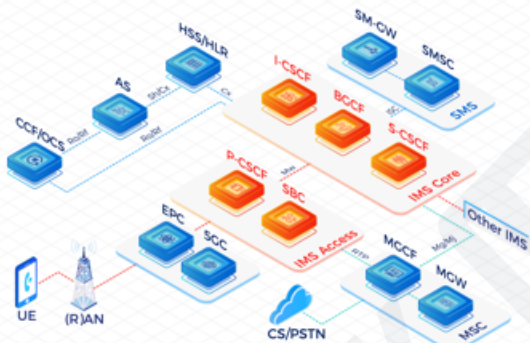
Advanced Resource Management with Real-Time Optimization



Million-Scale Capacity for Massive User Concurrency

Product Lines

IMS(VoLTE/VoNR)



ePDG(VoWiFi)



Satellite Core



Standardized Interfaces
Ensuring Multi-vendor
Compatibility



Service Continuity
Between LTE & WiFi



Open, Automated &
Secure OM with Visual
Analytics



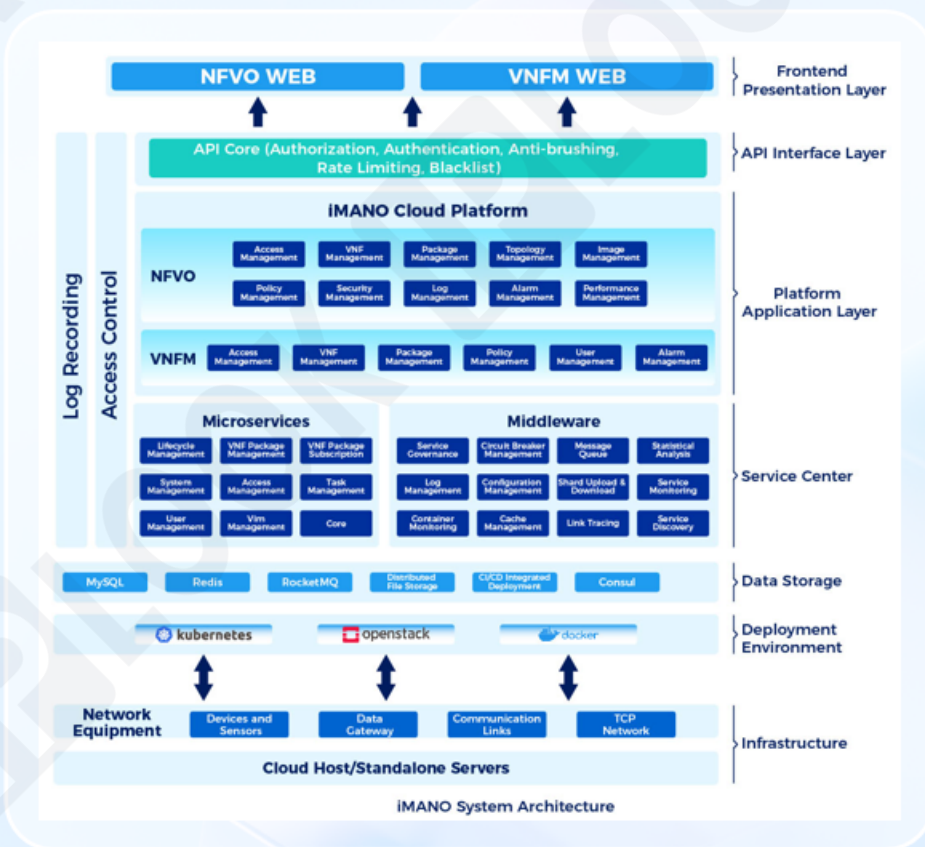
Enabling Direct 5G
Connection to LEO
Satellites

Cloud-native Core for High Capacity

IPLOOK's iMANO solution delivers customized deployment designs based on a fully cloud-native architecture, providing customers with reliable **4G/5G core networks**, **IMS**, **SMSC**, and **OSS** systems.

Key Features

- Scalability for millions of subscribers.
- Comprehensive management and orchestration based on **NFV** architecture.
- Integrated **Kubernetes(K8s)** and **OpenStack** to improve resource management.



4G/5G Converged Solution

End-to-End Wireless Infrastructure:

- Radios, Core Network, BSS/OSS, and CPEs.
- Seamless 4G/5G services with VoLTE and VoNR.

Performance-Driven and Scalable Design:

- EPC/5GC on X86/ARM bare metal or cloud-native.
- Multi-vendor compatibility.
- Millions of subscribers supported.

Application Scenarios:



MNO



MVNO



FWA



Solution for MNO

Added 4G Site:

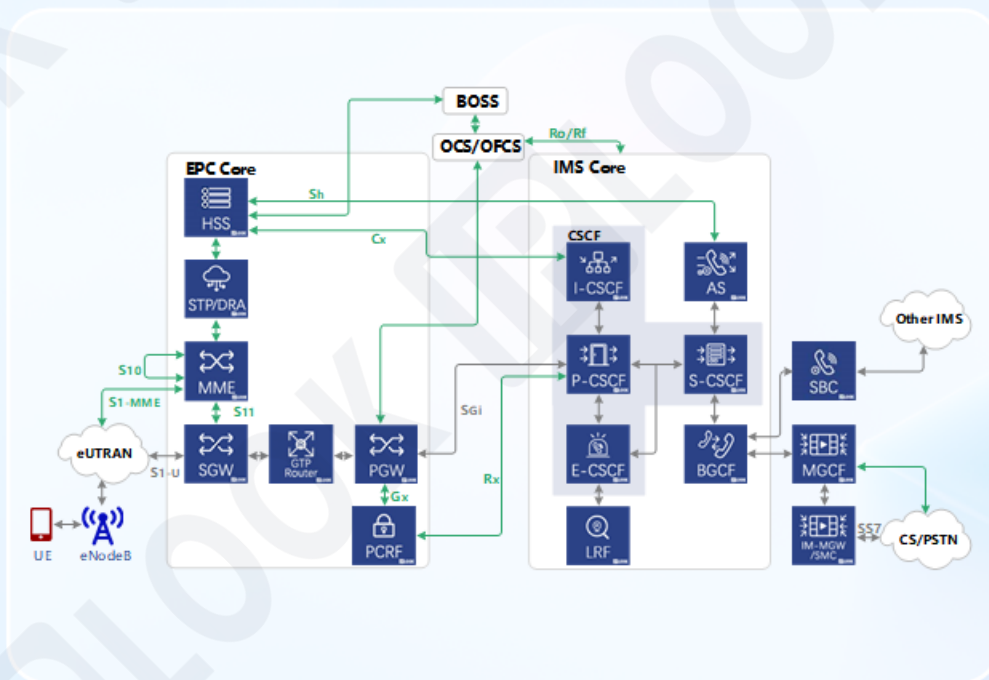
- Cooperation with existing 2G/3G sites by multi-band 4G base stations.
- Seamless integration of STP/DRA for efficient signaling and routing.

Core Network Cloud Transformation:

- Pre-integrated 5G NSA/SA core, software-upgradable for 5G activation.
- 4G/5G converged architecture enabling smooth transition and coexistence.

OSS/BSS Intelligent Upgrade:

- OCS + PCRF integration for optimized charging and policy control.
- Enhanced DRA-based routing and policy enforcement for improved service delivery.



Throughput of user plane

2G/3G phase-out timeline

New service go-live cycle

Solution for MVNO

Light MVNO:

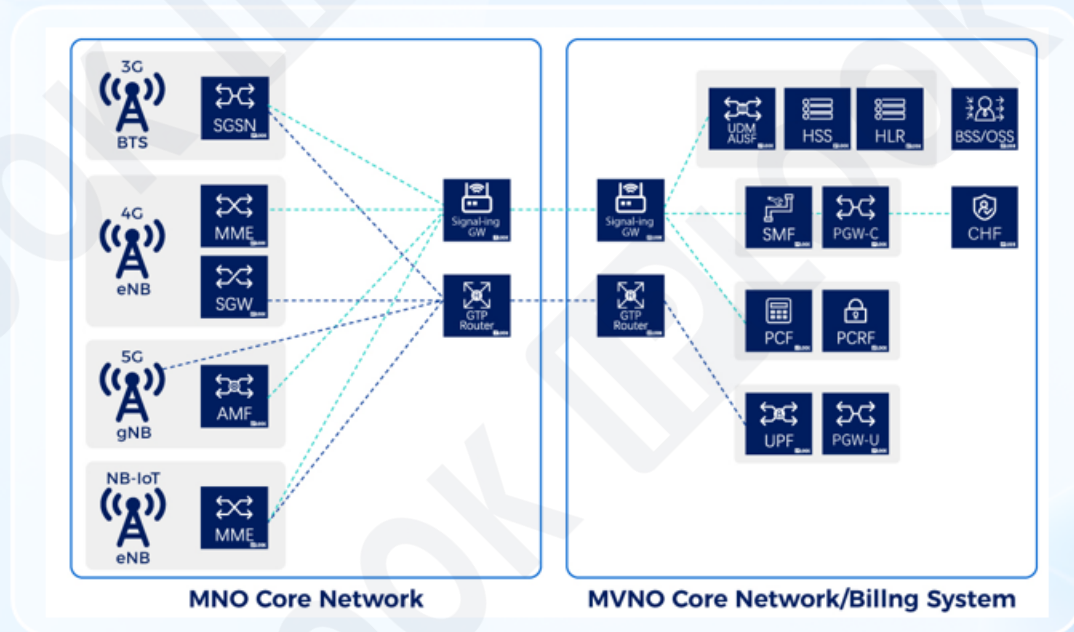
- **Core NEs:** HSS/HLR + BOSS
- **Capabilities:** Basic Subscriber Management & Billing operations

Full MVNO:

- **Enhanced NEs:** STP + DRA + GTP Router + PGW/GGSN + PCRF + SMSC/USSD Platform
- **Extended Capabilities:** End-to-End Network Control & value-added Service Development

MOCN Operator-Grade Deployment:

- **Core NEs:** MME + SGW + AMF + SMF + UPF
- **Scenario Adaptation:** Autonomous Network operations & multi-operator resource sharing



Application Scenarios:



International roaming for tourists



Retail



Machine to Machine (M2M)

Solution for WISP

Fixed Wireless Access Deployment:

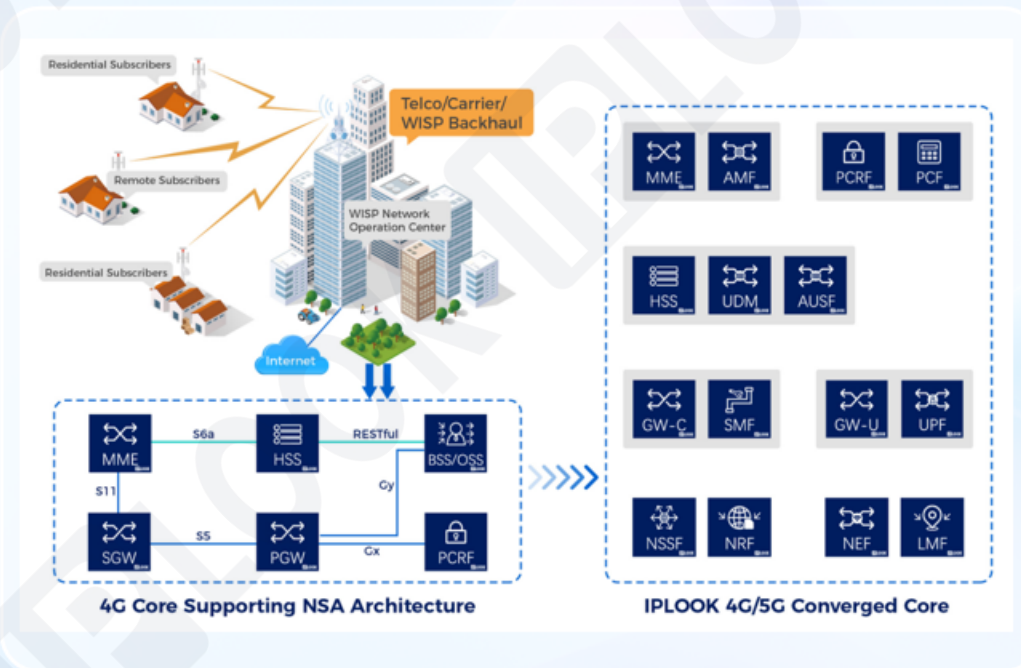
- 4G&5G-based data service as an alternative to FTTX, LAN, or ADSL.

Optimized Coverage for Various Scenarios:

- Remote rural areas with limited fiber infrastructure.
- Residential broadband services for urban and suburban users.

Enhanced Network Capabilities:

- Supports multi-vendor eNodeBs, enabling flexible deployment.
- Integrates seamlessly with RADIUS, OCS, and CG systems for adaptable billing.



Solution for Private Networks

Full-stack R&D Capabilities:

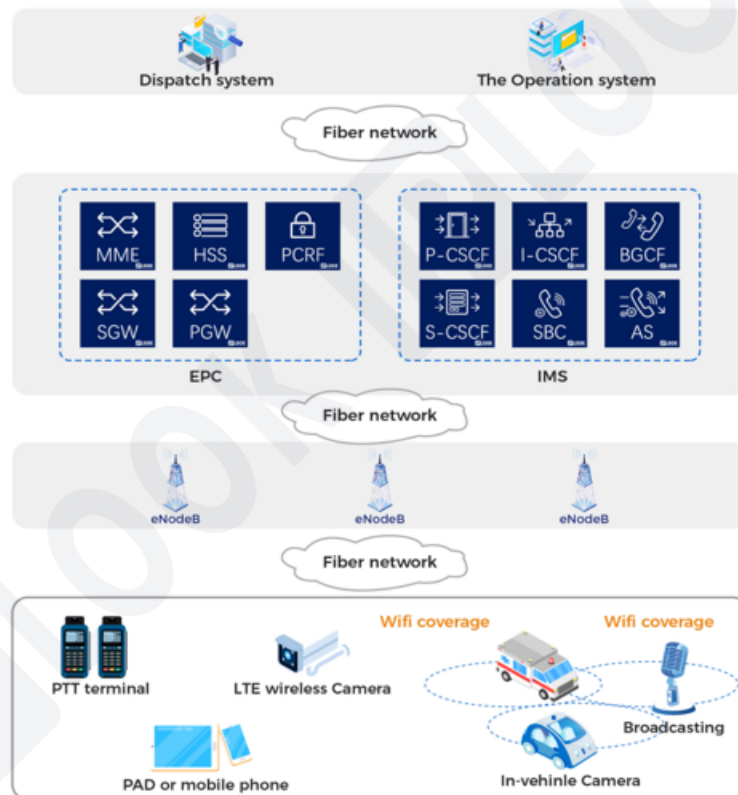
- Cloud-native 5GC + Compact DU/CU + Intelligent O&M Platform.
- Deterministic network slicing with latency optimized to <5ms.

Flexible Deployment Architecture:

- Hybrid Cloud/On-premise/MEC-ready deployment models.

Visualized Management:

- Visualized management achieving 90% fault self-diagnosis rate.



The end-to-end solution for Police or Mining

Solution for Islands

Application Scenarios:

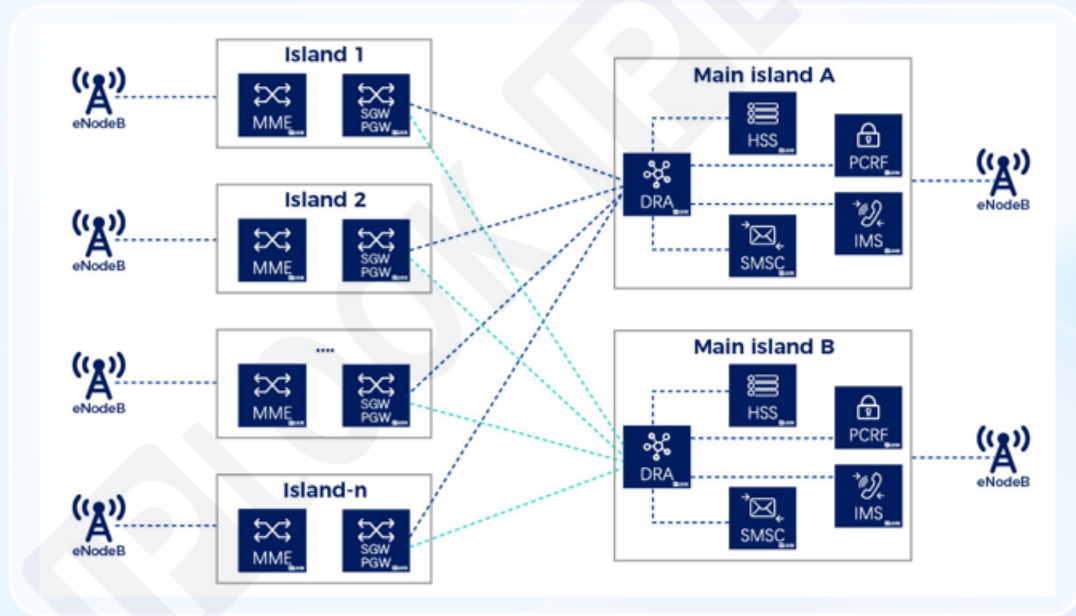
LTE network customized for island environments.

Services:

Data, VoLTE, CSFB, SMS

Key Benefits:

- High-quality network services optimized for long-latency transmission environments
- Rapid deployment of new 4G Networks
- 1+1 standby mode for enhanced reliability
- Efficient resource sharing to maximize network efficiency





3

Advantages & Innovations

Key Advantages



Full-Stack Core Network Integration:

End-to-End **3G/4G/5G/IMS** solutions with **50-70%** CAPEX reduction vs. traditional vendors.



Flexible Deployment & Fast Delivery:

Enable **72-hour** cloud/on-premise deployment, cutting time-to-market **40%** via modular pipelines.



Carrier-Grade Reliability:

13+ years expertise ensuring **99.999%** uptime and **zero-touch** automatic operation and maintenance.

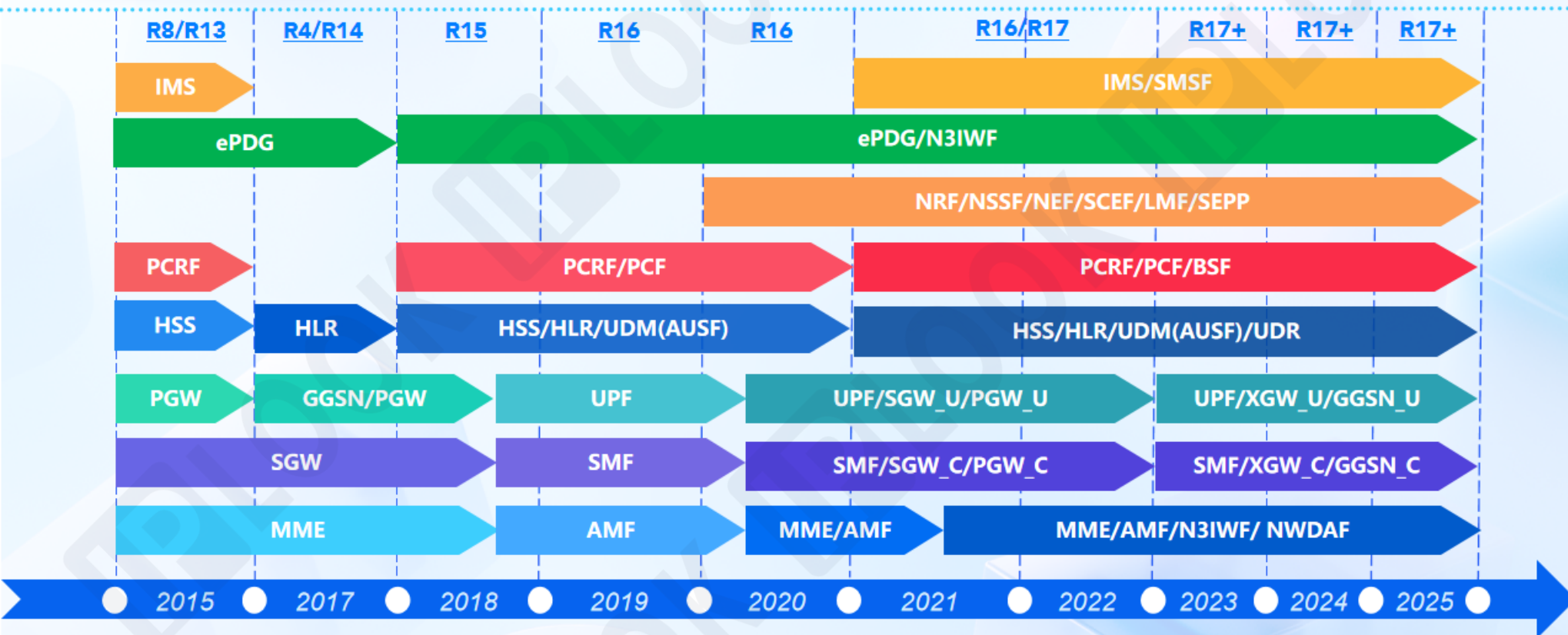


Future-Ready Architecture:

Pre-6G and LEO satellite-ready, supporting edge-cloud convergence and global coverage.

Product Release

3GPP Release



Roadmap

~R4.0.0

EPC/5GC

Features:

- EPC/5GC NEs commercial release | SMSC commercial release | VoWiFi support | Intra/Inter AMF handover, Inter RAT handover | X86/ARM CPU compatibility

Platform&HA

- Unified web O&M | Platform migration from CentOS7 to Debian12 | NF capacity enhance - Phase 1
- iMANO commercial

IMS

Features

- IMS Core NEs commercial Release | VoLTE & VoNR support | Multimedia priority service voice | Converged charging

R5.0.0

EPC/5GC

Core Capabilities

- VoWiFi & 5G handover | Satellite UPF edge computing | Non-3GPP access emergency services | 5G LAN multicast/broadcast

Platform Upgrade

- Cloud-native VNF platform | Optimized microservice governance

Network Enhancement

- NR satellite access | Enhanced network openness | Intelligent paging strategy

IMS

Features

- IP-SM-GW | Voice mail server | Customized multimedia alerting server | Missed call alert server | Multimedia priority service | Enhancement of user-level log tracing

R6.0.0

EPC/5GC

Core Innovations

- Enhanced VoWiFi roaming, AI-Driven O&M | Satellite 5GC deployment | 5G access-aware communication

Platform Evolution

- Unified cloud-native CNF/VNF platform

Network Optimization

- ATSSS traffic scheduling | IAB backhaul support | NWDaf intelligent analysis

IMS

Features

- eSBC | Satellite voice communication | Performance collection and intelligent analysis

R7.0.0

EPC/5GC

Core Breakthroughs

- XR/interactive media low latency support | Network slicing intelligent management and control

Network Expansion

- Non-terrestrial network (NTN) emergency service enhancement | Energy efficiency optimization (EIF)

IMS

Features

- VoNR+ based on IMS data channel support
- Enhancement of AI-based operation and maintenance

Before 2025

2025

2026

2027

4

Industry Collaboration

Strategic Partners

Asia's Top 5 Telecom Equipment Vendor:

Strategic investor driving R&D collaboration



Global Leading LEO Satellite Company:

Joint deployment of satellite core networks



Asia's Largest Mining Solutions Integrator:

Industrial private network support



Asia's Largest LEO Satellite Operator:

Space-ground integrated communication solutions



Operator



Industrial



Satellite

Global Clients



Industry Ecosystem



IPLOOK

THANK YOU



IPLOOK Networks



IPLOOK Networks



+864008507700



IPLOOK Networks



sales@iplook.com



www.iplook.com

